



Thermal Image Binocular
Habrok Pro Series (V5.5.128build250722)

Release Notes

TABLE OF CONTENTS

Chapter 1 Introduction.....	1
Chapter 2 Functional Optimization	2
2.1 Image Settings.....	2
2.1.1 Image Pro 3.0 Adding	2
2.1.2 Recognition mode & Jungle mode are renamed to Observation mode & Detection mode	2
2.1.3 Newly added 2 Display Modes	2
2.1.4 Newly added 2 Palettes: Red Monochrome; Green Monochrome	3
2.1.5 Newly support Image Style function	4
2.1.6 When PIP is on, the Zoom Ratio position changes	4
2.2 Distance Measurement.....	4
2.2.1 Newly support THD function:	4
2.2.2 LRF Reading display improvement	4
2.3 System Settings	5
2.3.1 Newly support Reset function.....	5
2.3.2 The menu item Version now shows the current memory of the SD card.....	5
2.3.3 Newly support Diagnostic Log function.....	5
Chapter 3 Cyber Security Optimizations	5
3.1 New APP Connection Steps	6
3.1.1 Added Remote Access function	6
3.1.2 Added PIN Code Confirmation when Connecting to Sight App.	6
3.2 Added Screen Lock Function.....	7
3.2.1 Set Screen Lock Passcode.....	7
3.3 Other Updates.....	8

Chapter 1 Introduction

This document introduces new features and optimizations in V5.5.128 firmware version of the products.

Version Information

Item	Description
Firmware Version	V5.5.128build250722
Models	Habrok Pro: HQ50L; HQ50LN; HX60L; HX60LN
Mobile Client	HIKMICRO Sight, V2.6.7 and above

Chapter 2 Functional Optimization

2.1 Image Settings

This update improves the visual experience.

2.1.1 Image Pro 3.0 Adding

New image algorithm reduces noise, enhances heat source highlights.

2.1.2 Recognition mode & Jungle mode are renamed to Observation mode & Detection mode

2.1.3 Newly added 2 Display Modes

From Day/Night/Auto to Day/Night/Green/Yellow/Auto mode



: Green mode. It's a night vision mode. You can use this mode according to your personal preference.



: Yellow mode. It's a night vision mode. You can use this mode according to your personal preference.



2.1.4 Newly added 2 Palettes: Red Monochrome; Green Monochrome

Red Monochrome

The whole image is red colored. The higher the temperature is, the lighter the color is.



Green Monochrome

The whole image is green colored. The higher the temperature is, the lighter the color is.



2.1.5 Newly support Image Style function

You can choose from Day/Twilight/Night style.

2.1.6 When PIP is on, the Zoom Ratio position changes

When the PIP function is turned on, the zoom ratio will move from the original lower left corner to the PIP view.

2.2 Distance Measurement



2.2.1 Newly support THD function:

THD: the horizontal distance measuremen

2.2.2 LRF Reading display improvement

The LRF (Laser Range Finder) reading now appears on the top center of the screen and disappears automatically after 5 seconds by default. Fixed an issue where readings flickered as "---".



- When THD is enabled, the straight-line distance is displayed first, followed by the THD. As shown in the figure above,  is the straight-line distance and  is THD.
- The ranging result will be displayed as “000” if laser ranging fails.

2.3 System Settings

2.3.1 Newly support Reset function

This function erases all content and settings, including basic settings, storage, passcode, and hotspot password.

2.3.2 The menu item Version now shows the current memory of the SD card.

2.3.3 Newly support Diagnostic Log function

This function can be used for troubleshooting after it is enabled

Chapter 3 Cyber Security Optimizations

These firmware adjustments align with the updated requirements of the CE RED Directive (2014/53/EU) and the EN 18031 standard. These regulations focus on improving network security, personal data privacy, and fraud prevention for wireless equipment in the EU market. EN 18031, developed by CEN and CENELEC, ensures compliance with RED Article 3.3(d), (e), and (f), fostering consumer trust through enhanced cybersecurity:

Article 3.3(d) radio equipment does not harm the network or its functioning nor misuse network resources, thereby causing an unacceptable degradation of service.

Article 3.3(e) radio equipment incorporates safeguards to ensure that the personal data and privacy of the user and the subscriber are protected.

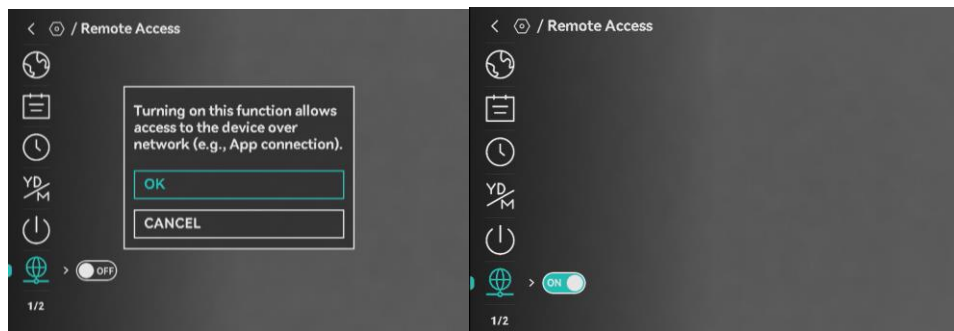
Article 3.3(f) radio equipment supports certain features ensuring protection from fraud.

3.1 New APP Connection Steps

This update adds enhanced security features for remote connection scenario.

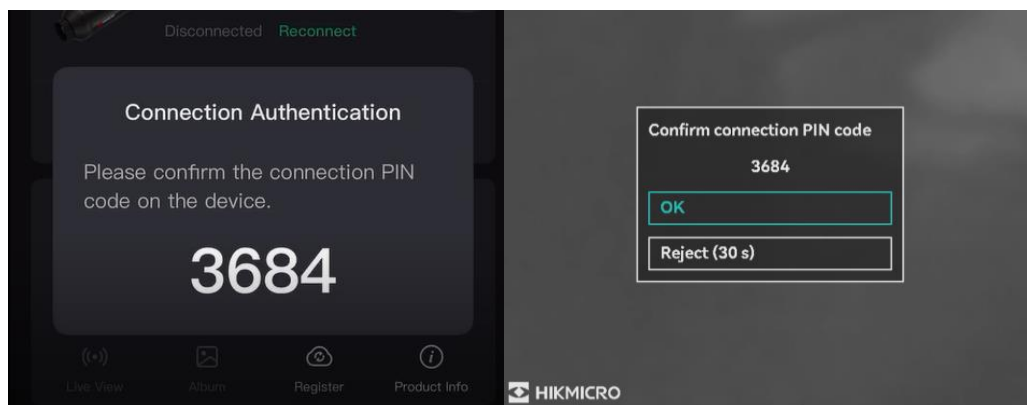
3.1.1 Added Remote Access function

- Remote Access, which was previously enabled by default, has been added as a setting in the menu in this version. Only when it is enabled can users connect the App to the device.
- Upon first startup after firmware update, the device will display a setup prompt to enable or disable **Remote Access** function.
- You can also enter the menu and navigate to **Advanced Settings > General Settings > Remote Access** to enable or disable the function.



3.1.2 Added PIN Code Confirmation when Connecting to Sight App.

- When you first time connect your phone to the device's hotspot and open the Sight App after update, a Connection PIN Code will appear on both your phone and the device.
- Choose OK to confirm the PIN Code on the device to establish the connection. Once connected, you can view and control the device's interface directly from your phone.



3.1.3 Customizable Hotspot Password

- When the device is connected to your phone, you can customize the hotspot


password via the HIKMICRO Sight app > **Device Info** page.

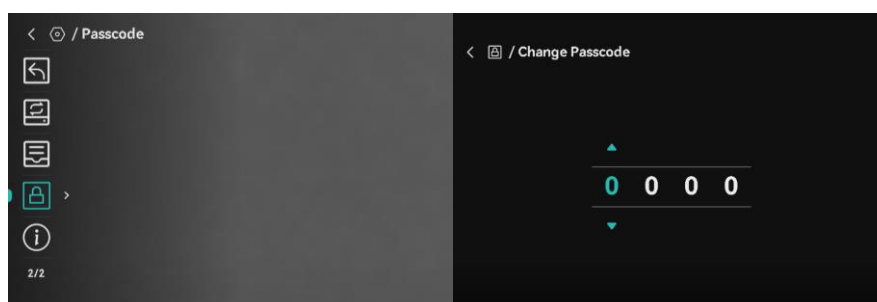
- Password requirements:
 - Must be 8 characters.
 - Uppercase letters, lowercase letters, and numbers are supported.
- The hotspot password customized will be erased when you reset the device.


3.2 Added Screen Lock Function

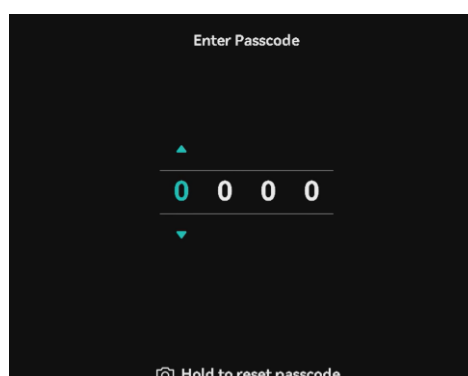
You can now set a passcode to lock the device screen to avoid unauthorized access to the device.

3.2.1 Set Screen Lock Passcode

- The Screen Lock function is off by default. You can enter the menu, and go to **Advanced Settings > General Settings > Passcode**  to enable it.
- When passcode is enabled, you can customize a 4-digit numeric passcode in the configuration interface.



- By setting that up, you need to enter the passcode when the device is powered on or woken up from standby mode. If you forget the passcode, you can hold  to reset it on the lock screen. This operation requires a factory reset to the device.



- The screen lock passcode will be erased when you reset the device.

3.3 Other Updates

- Added **Operation Log** on **Sight App > Device Info** page allowing user to better monitor and track security.
- Now device won't show itself as USB disk connecting to PC when it's off or the screen is locked.
- Added Security Version & Redline info on the **Advanced Settings > General Settings > Version** Page.

